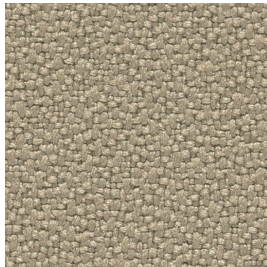


Prime Time

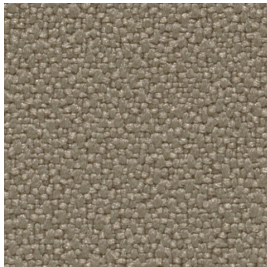
Panel
Acoustic



Stucco
1012187



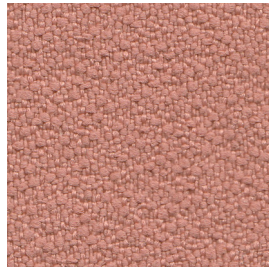
Chino
1010107



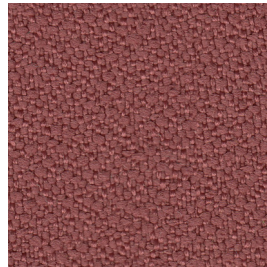
Mink
1010105



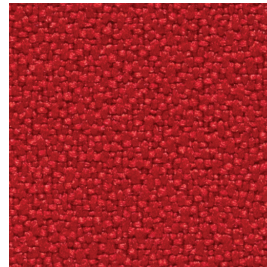
Parchment
1010104



Bloom
1012201



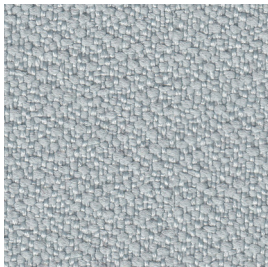
Woodrose
1012200



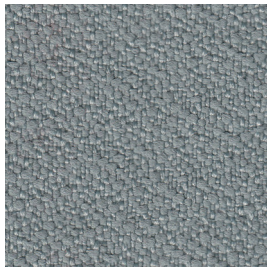
Scarlet
1010086



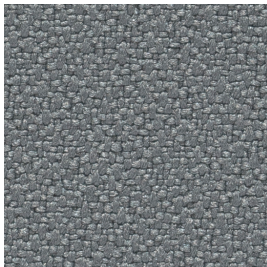
Lunar
1012186



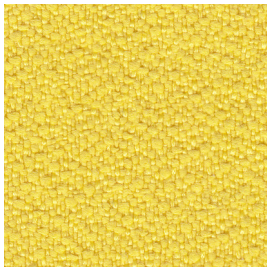
Silverado
1012188



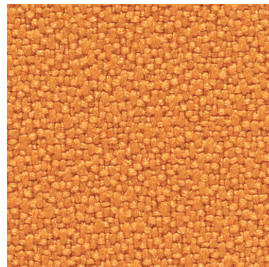
Shark
1012189



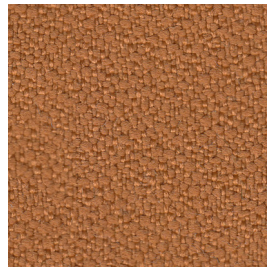
Elephant
1010102



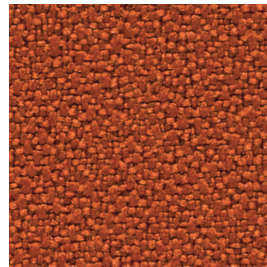
Ray
1012198



Tangerine
1010083



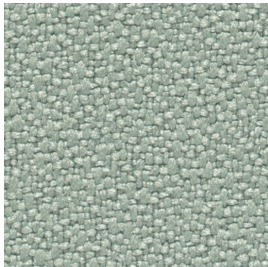
Copper
1012199



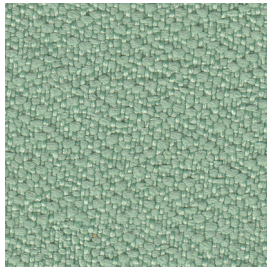
Paprika
1010084



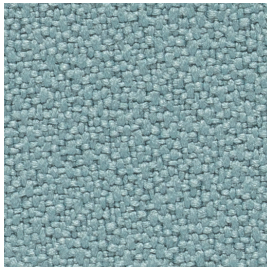
Sterling
1010106



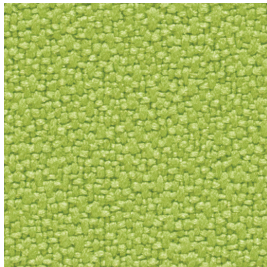
Aloe
1010095



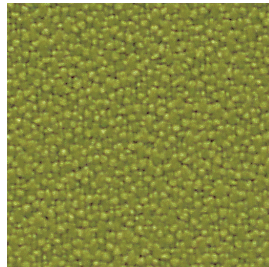
Lichen
1012195



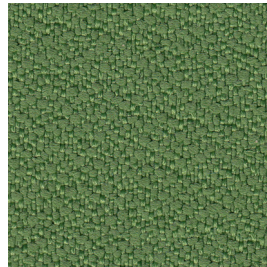
Chambray
1010094



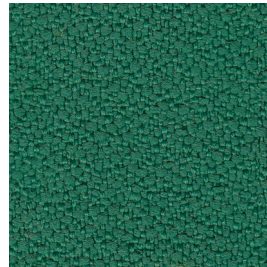
Key Lime
1010096



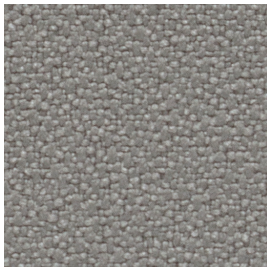
Spring
1010097



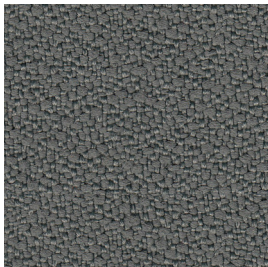
Fairway
1012197



Shamrock
1012196



Cinder
1010103



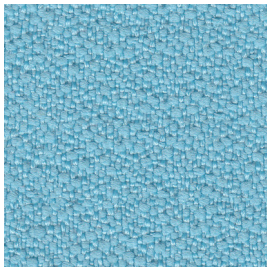
Granite
1012190



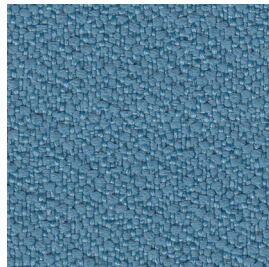
Shale
1010101



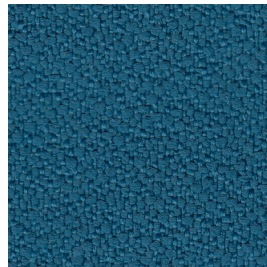
Jet Black
1010100



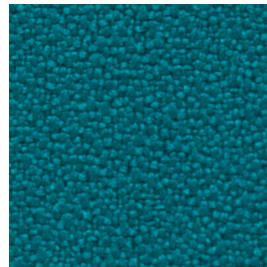
Delft
1012194



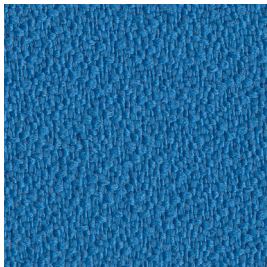
Bluestone
1012193



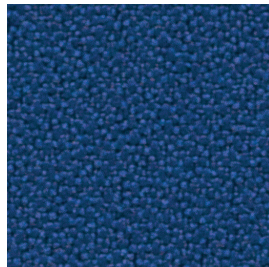
Academy
1012191



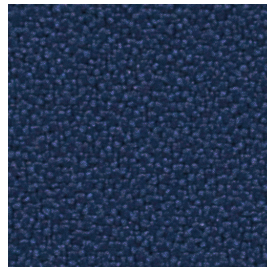
Tropic
1010093



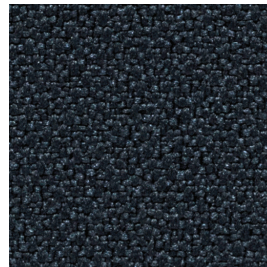
Cerulean
1012192



Azure
1010091



Marina
1010090



Admiral
1010089

Prime Time

Panel
Acoustic

Specifications

Content
100% post-consumer recycled polyester

Weight
15.0 oz./lin. yd.


Width
66" min. useable

Repeat
none


Cleaning Code


W-S

Performance

 **Colorfastness to Light (AATCC 16 Option 3)**
Grade 4.5 min. at 40 hours

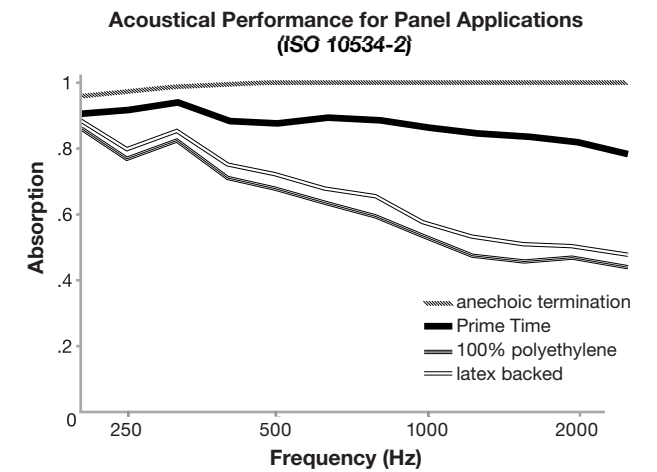
 **Colorfastness to Crocking (AATCC 8)**
Grade 4.5 min. dry & Grade 4.5 min. wet

 **Breaking Strength (ASTM D5034)**
325 lbs min. warp and 275 lbs min. fill

 **Flammability (ASTM E84)**
Class I or A

Acoustical Performance

The plot below summarizes impedance tube measurements of absorption of an anechoic termination and various fabrics in front of the anechoic termination.



NRC of anechoic termination
1.00

NRC of fabric in front of anechoic termination
.80

Miscellaneous

Proudly woven in the USA supporting our local communities.
Colors may vary slightly between dye lots.
This is a directional fabric.
Application testing of this product is recommended.

Visit SoundAway.com or call to request samples.

 This pattern is included in the underwriters laboratory panel fabric recognition program. Additional testing of this U.L. recognized component fabric is not required on approved panels from participating manufacturers.

ACT registered certification marks.